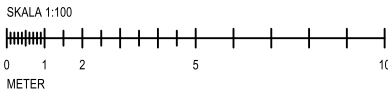


KÄLLARPLAN



FÖRKLARING

MÄTT ANGES I MILLIMETER.

A-MÄTT AVSER LIKA DELNING INOM ANGIVEN MÄTTKEDJA.

BETECKNINGAR

- = STOMVÄGG ENLIGT K-HANDLING
- = PLUSHÖJD TILL BETONGPLATTA
- = PLUSHÖJD TILL FÄRDIGT GOLV
- FS = FÖRDELARSKÅP
- FTX = FTX-aggregat (Från- och tilluftsventilation med återvinning)
- MC = MEDIACENTRAL
- RL = RÖKLUCKA
- STPR = STUPRÖR
- TL = TAKLUCKA
- UT = UNDERTAK

BRAND

BETRÄFFANDE BRANDSKYDDSBESKRIVNING SE SEPARAT HANDLING UPPRÄTTAD AV FSD GÖTEBORG AB.

- = EFTERLYSANDE UTRYMNINGSSKYLT
- = GENOMLYST UTRYMNINGSSKYLT
- = BRANDCELLSGRÄNS EI-30
- = BRANDCELLSGRÄNS EI-60
- = BRANDCELLSGRÄNS REI-30
- = UTRYMNINGSRIKTNING

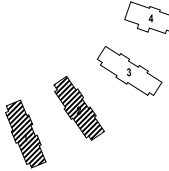
| | | | | |
|-----|-----|------------------|-------|------|
| | | | | |
| | | | | |
| | | | | |
| | | | | |
| BET | ANT | ÄNDRINGEN AVISER | DATUM | SIGN |

RELATIONSHANDLING

Derome
Mark & Bostad

TUVE BYGG

BRF BJÖRKVIKEN
ISFABRIKSVÄGEN



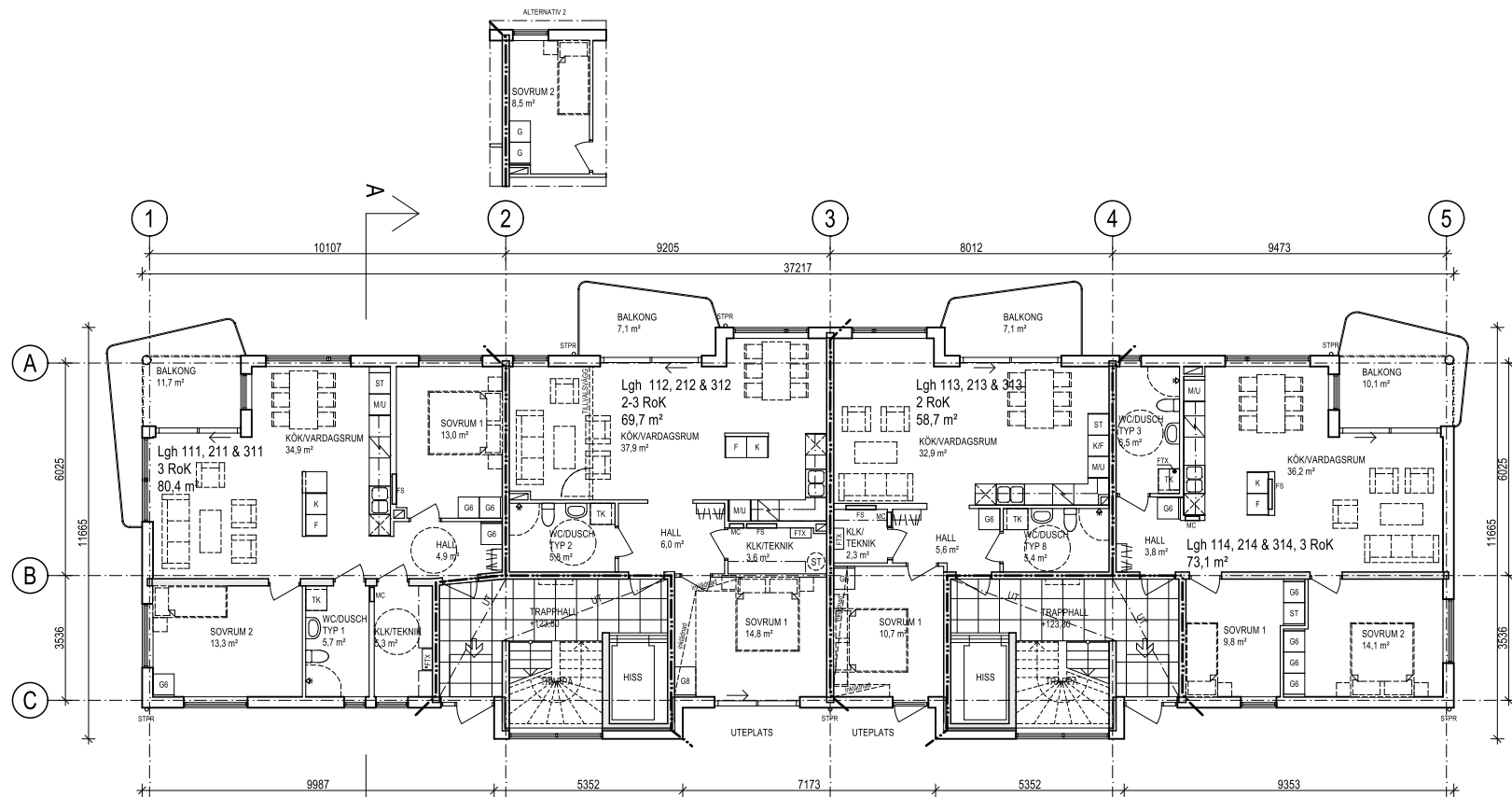
| | | | |
|----|------------------------|-------------------------|---------------|
| X | A | LILJEWALL arkitekter ab | 010-205 10 80 |
| K | VBK | | 031-703 35 00 |
| VS | Energi Triangeln AB | | 031-707 97 30 |
| VE | EH-Konsult AB | | 031-27 17 40 |
| E | BA Elteknik | | 0300-725 60 |
| M | Carlbergs | | 031-742 25 80 |
| BR | Fast Engineering/BAWAB | | 070-583 75 14 |
| LJ | Akustikforum | | 031-61 63 61 |
| G | Pålab | | 0730-69 84 43 |

| | | |
|-------------|----------------------|--------------|
| UPPDRAG NR | RITAD AV | HANDLÄGGARE |
| 1 14 008 01 | VS | N-G ERIKSSON |
| DATUM | ANSVARIG | |
| 2015-05-20 | PER-HENRIK JOHANSSON | |

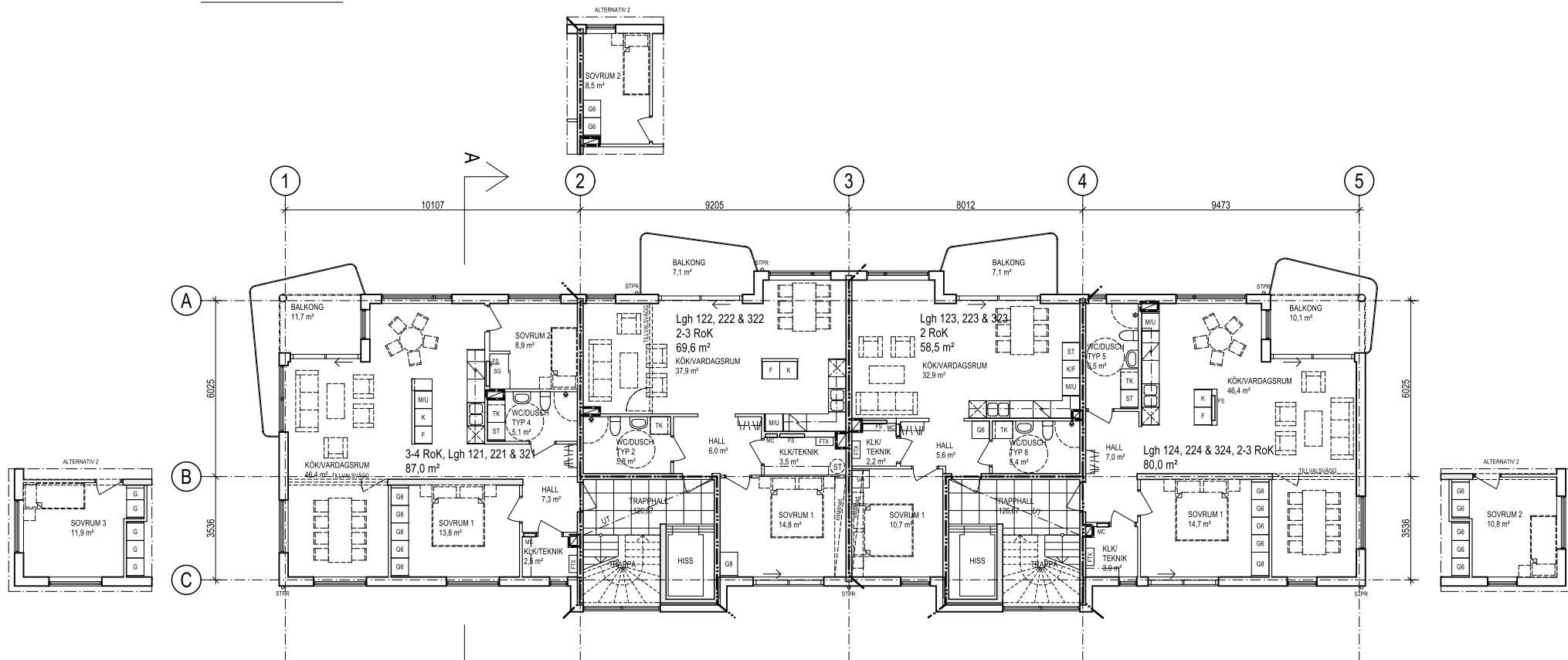
NYBYGGNAD AV BOSTÄDER

PLANER
HUS 1-2, KÄLLARPLAN (PLAN 0)

| | | | |
|-------|--------------------------|-----------|-------|
| SKALA | A1 = 1:100 A3 = 1:200 | NUMMER | I BET |
| | | A-40.1-10 | |



ENTRÉPLAN



PLAN 2

HÄNVISNING
SE RITNING A-40.1-10

| BET | ANT | ÄNDRINGEN AVISER | DATUM | SIGN |
|-----|-----|------------------|-------|------|
| | | | | |
| | | | | |
| | | | | |

RELATIONSHANDLING

Derome
Mark & Bostad

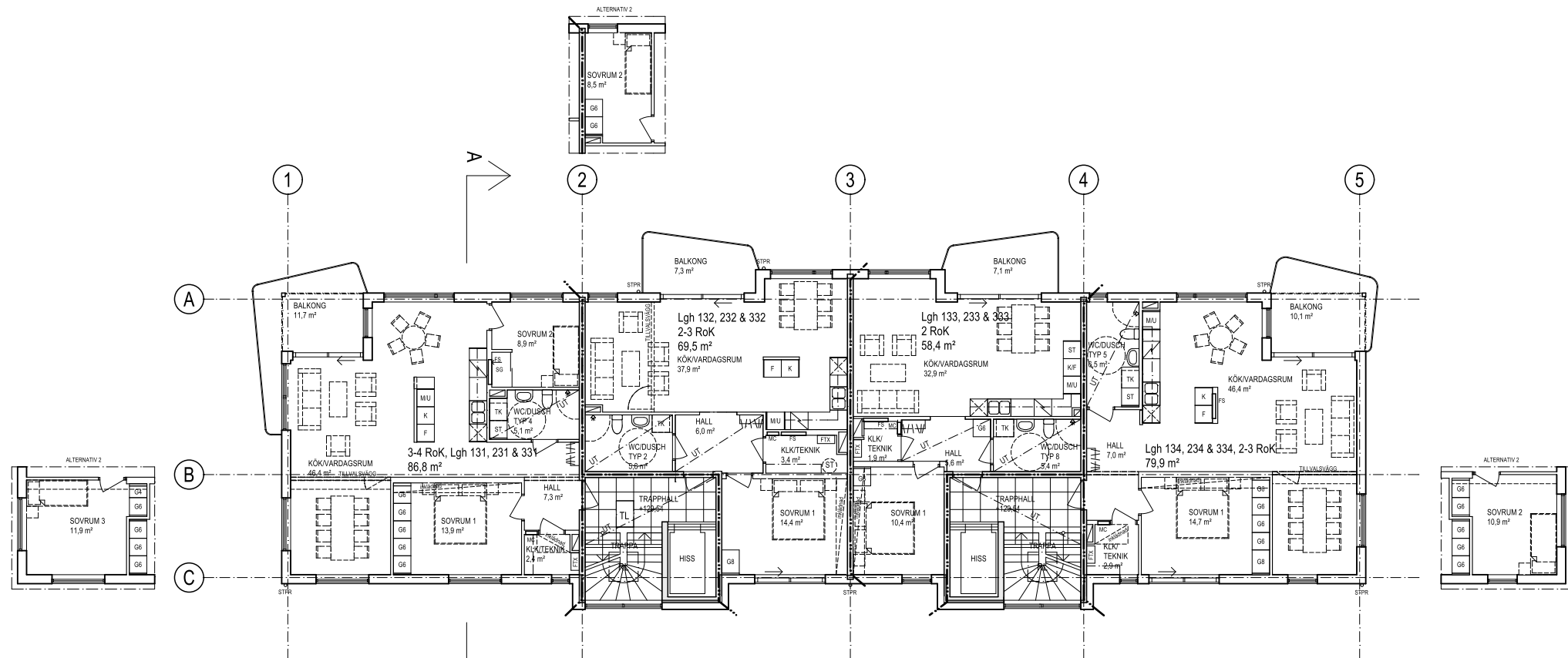
TUVE BYGG

BRF BJÖRKVIKEN
ISFABRIKSVÄGEN

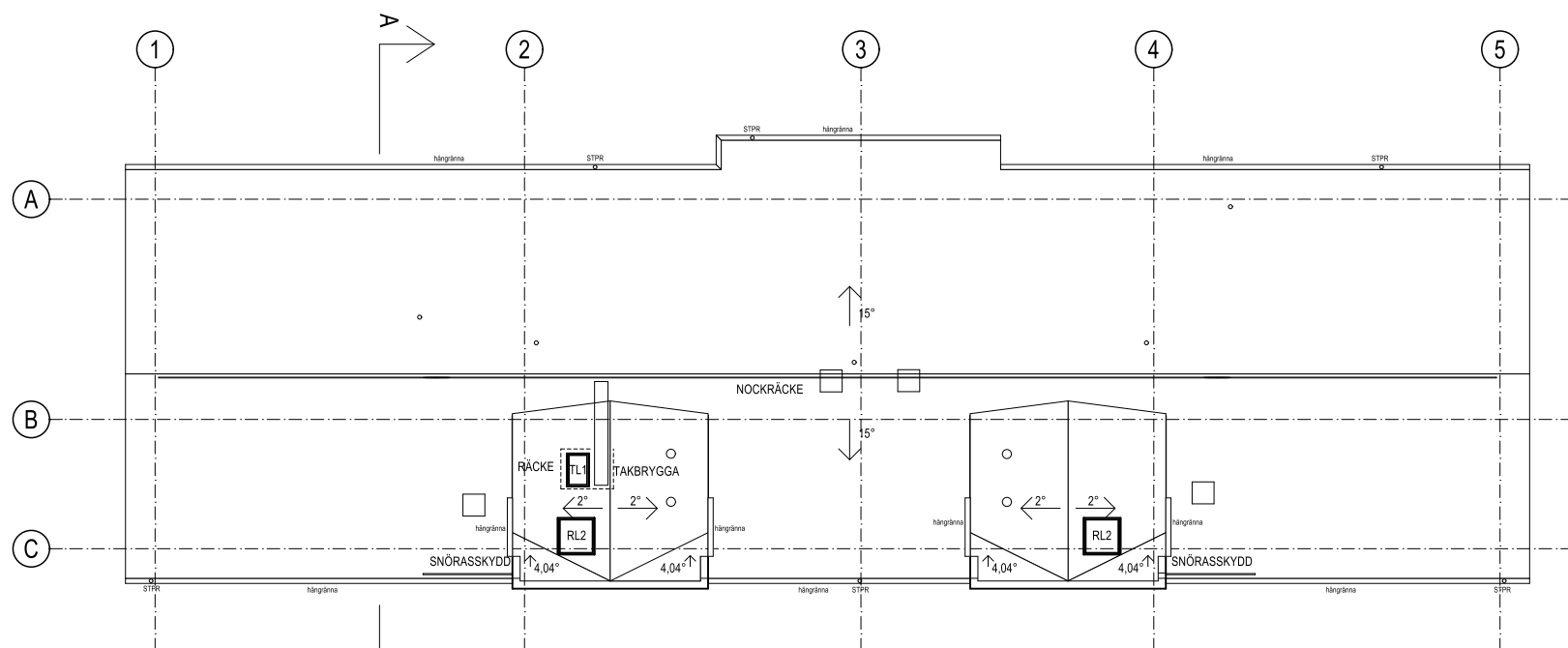
| | | | |
|----|------------------------|-------------------------|---------------|
| X | A | LILJEWALL arkitekter ab | 010-205 10 80 |
| K | VBK | | 031-703 35 00 |
| VS | Energi Triangeln AB | | 031-707 97 30 |
| VE | EH-Konsult AB | | 031-27 17 40 |
| E | BA Elteknik | | 0300-725 60 |
| M | Carlbergs | | 031-742 25 80 |
| BR | Fast Engineering/BAWAB | | 070-583 75 14 |
| LJ | Akustikforum | | 031-61 63 61 |
| G | Pålab | | 0730-69 84 43 |

| | | |
|-------------|----------------------|--------------|
| UPPDRAG NR | RITAD AV | HANDLÄGGARE |
| 1 14 008 01 | VS | N-G ERIKSSON |
| DATUM | ANSVARIG | |
| 2015-05-20 | PER-HENRIK JOHANSSON | |

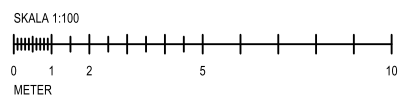
| | | |
|--|--------|-----------|
| NYBYGGNAD AV BOSTÄDER | | |
| PLANER | | |
| HUS 1-3, ENTRÉPLAN (PLAN 1) OCH PLAN 2 | | |
| SKALA | NUMMER | I BET |
| A1 = 1:100 A3 = 1:200 | | A-40.1-11 |



PLAN 3



TAKPLAN



HÄNVISNING

SE RITNING A-40.1-10

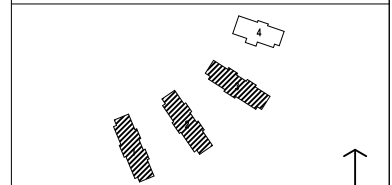
| BET | ANT | ÄNDRINGEN AVISER | DATUM | SIGN |
|-----|-----|------------------|-------|------|
| | | | | |
| | | | | |
| | | | | |

RELATIONSHANDLING

Derome
Mark & Bostad

TUVE BYGG

BRF BJÖRKVIKEN
ISFABRIKSVÄGEN



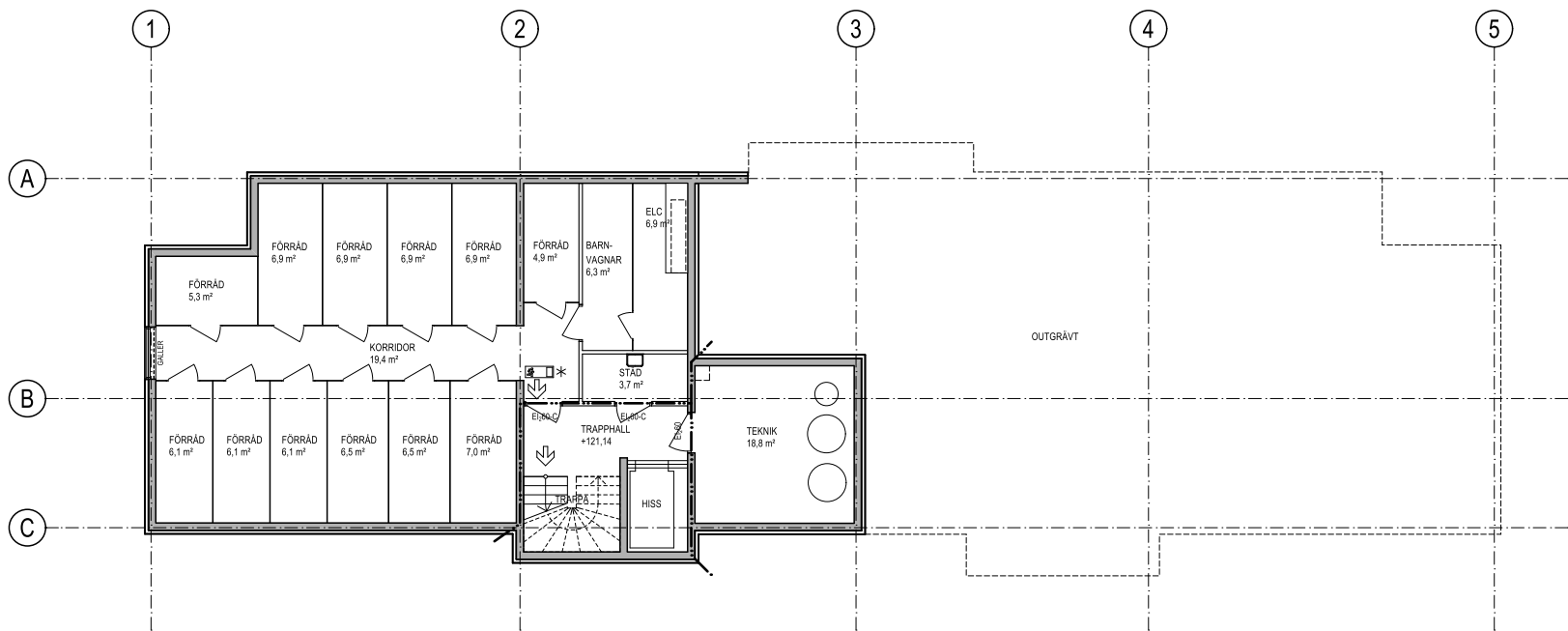
| | | | |
|---|----|-------------------------|---------------|
| X | A | LILJEWALL arkitekter ab | 010-205 10 80 |
| | K | VBK | 031-703 35 00 |
| | VS | Energi Triangeln AB | 031-707 97 30 |
| | VE | EH-Konsult AB | 031-27 17 40 |
| | E | BA Elteknik | 0300-725 60 |
| | M | Carlbergs | 031-742 25 80 |
| | BR | Fast Engineering/BAWAB | 070-583 75 14 |
| | LJ | Akustikforum | 031-61 63 61 |
| | G | Pålab | 0730-69 84 43 |

| | | |
|-------------|----------------------|--------------|
| UPPDRAG NR | RITAD AV | HANDLÄGGARE |
| 1 14 008 01 | VS | N-G ERIKSSON |
| DATUM | ANSVARIG | |
| 2015-05-20 | PER-HENRIK JOHANSSON | |

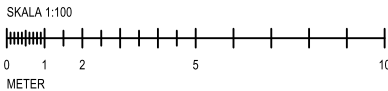
NYBYGGNAD AV BOSTÄDER
PLANER
HUS 1-3, PLAN 3 OCH TAKPLAN

| | | | |
|-------|--------------------------|--------|-----------|
| SKALA | A1 = 1:100 A3 = 1:200 | NUMMER | I BET |
| | | | A-40.1-13 |

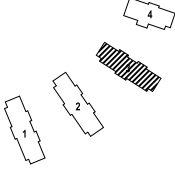
PATH: lwzserver7/Projektar/Liljewall/201411400800A/ARCHICAD/BRF_BJÖRKVIKEN_HUS_1-3_KÄLLARE_HUS_1-2.rvt; PRINTED: 2015-07-01 - 11:39; BY: rda



KÄLLARPLAN



HÄNVISNING
SE RITNING A-40.1-10

| | | | | |
|---|--------------------------|-------------------------|---------------|------|
| BET | ANT | ÄNDRINGEN AVISER | DATUM | SIGN |
| RELATIONSHANDLING | | | | |
| <div>Derome</div> <div>Mark & Bostad</div> | | | | |
| <div>TUVE BYGG</div> | | | | |
| BRF BJÖRKVIKEN | | | | |
| ISFABRIKSVÄGEN | | | | |
|  | | | | |
| ✕ | A | LILJEWALL arkitekter ab | 010-205 10 80 | |
| | K | VBK | 031-703 35 00 | |
| | VS | Energi Triangeln AB | 031-707 97 30 | |
| | VE | EH-Konsult AB | 031-27 17 40 | |
| | E | BA Elteknik | 0300-725 60 | |
| | M | Carlbergs | 031-742 25 80 | |
| | BR | Fast Engineering/BAWAB | 070-583 75 14 | |
| | LJ | Akustikforum | 031-61 63 61 | |
| | G | Pålab | 0730-69 84 43 | |
| | | | | |
| | | | | |
| UPPDRAG NR | | RITAD AV | HANDLÄGGARE | |
| 1 14 008 01 | | VS | N-G ERIKSSON | |
| DATUM | | ANSVARIG | | |
| 2015-05-20 | | PER-HENRIK JOHANSSON | | |
| NYBYGGNAD AV BOSTÄDER | | | | |
| PLANER | | | | |
| HUS 3, KÄLLARPLAN (PLAN 0) | | | | |
| SKALA | A1 = 1:100 A3 = 1:200 | NUMMER | A-40.1-30 | |
| | | | BET | |

PATH: lwzserver7\Projekt\liljewall\201411400800A\ARCH\CAD\BRF BJÖRKVIKEN\KÄLLARE_HUS_3.plt; PRINTED 2015-07-01 - 11:47; BY: lita



SE RITNING A-40.1-10

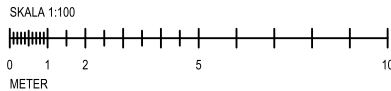
RELATIONSHANDLING

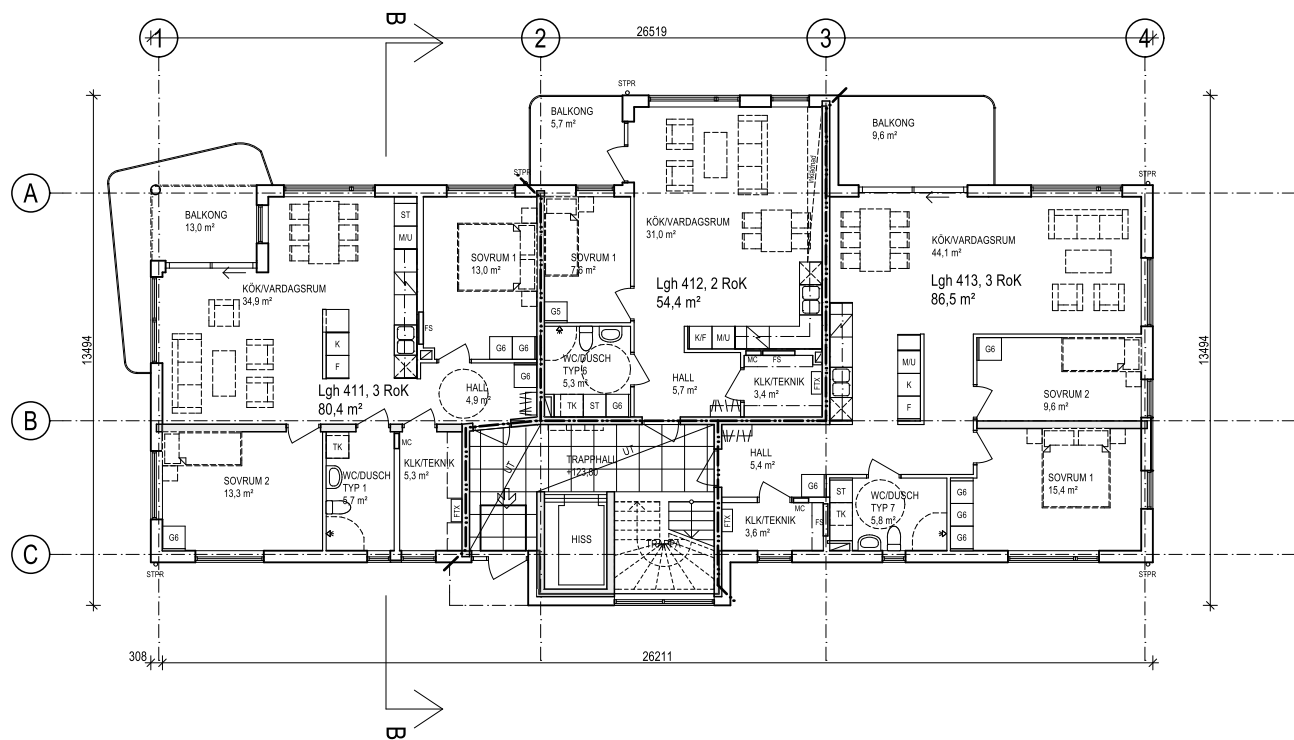
| | | |
|---------------------------|----------------------------------|-----------------------------|
| UPPDRAG NR 1 14 008 01 | RITAD AV VS | HANDLÄGGARE N-G ERIKSSON |
| DATUM 2015-05-20 | ANSVARIG PER-HENRIK JOHANSSON | |

PLANER

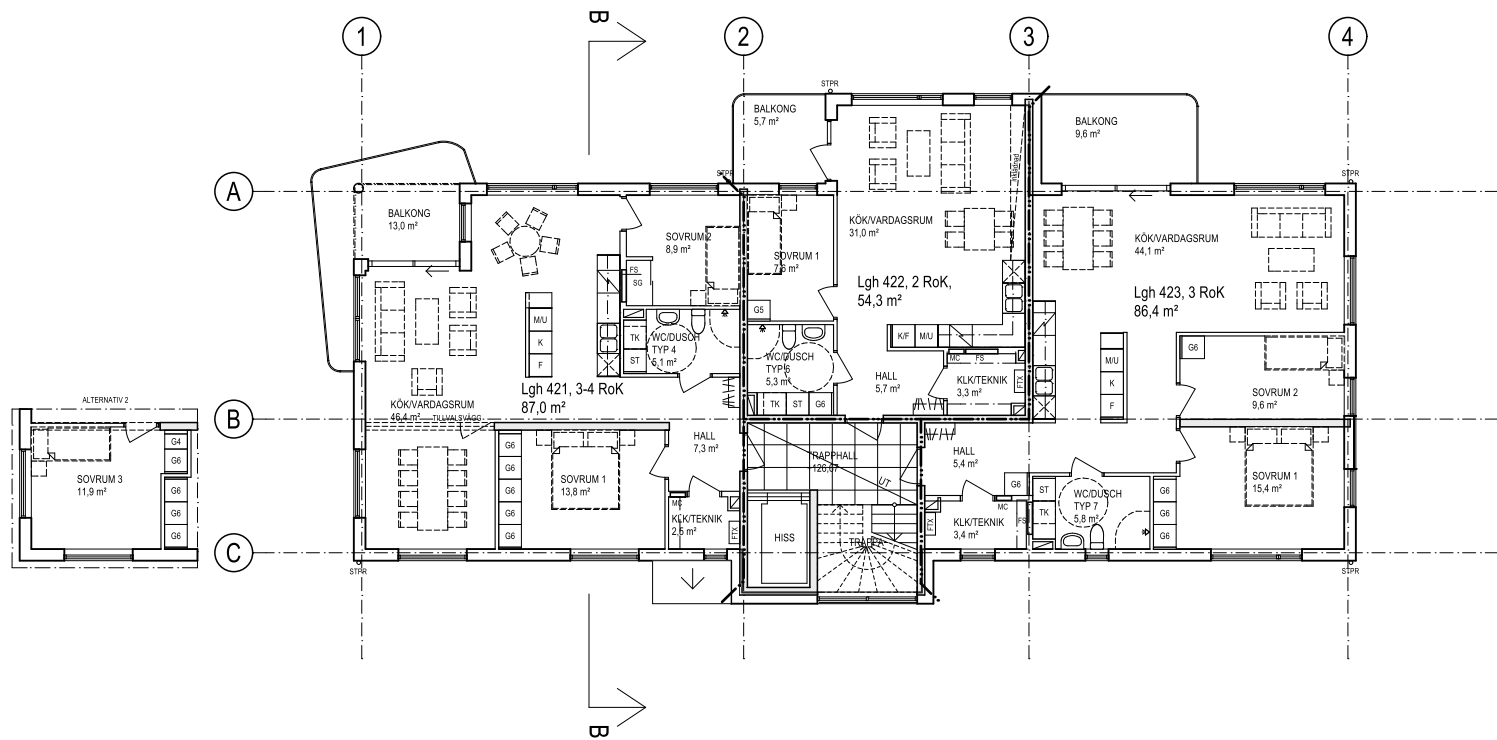
HUS 4, KÄLLARPLAN (PLAN 0)

| | | |
|--------------------------|-----------|-----|
| SKALA | NUMMER | BET |
| A1 = 1:100 A3 = 1:200 | A-40.1-40 | |

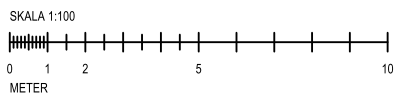




ENTRÉPLAN



PLAN 2



HÄNVISNING

SE RITNING A-40.1-10

| BET | ANT | ÄNDRINGEN AVISER | DATUM | SIGN |
|-----|-----|------------------|-------|------|
|-----|-----|------------------|-------|------|

RELATIONSHANDLING

Derome
Mark & Bostad

TUVE BYGG

BRF BJÖRKVIKEN
ISFABRIKSVÄGEN

| | | | |
|---|----|-------------------------|---------------|
| X | A | LILJEWALL arkitekter ab | 010-205 10 80 |
| X | K | VBK | 031-703 35 00 |
| X | VS | Energi Triangeln AB | 031-707 97 30 |
| X | VE | EH-Konsult AB | 031-27 17 40 |
| X | E | BA Elteknik | 0300-725 60 |
| X | M | Carlbergs | 031-742 25 80 |
| X | BR | Fast Engineering/BAWAB | 070-583 75 14 |
| X | LJ | Akustikforum | 031-61 63 61 |
| X | G | Pålab | 0730-69 84 43 |

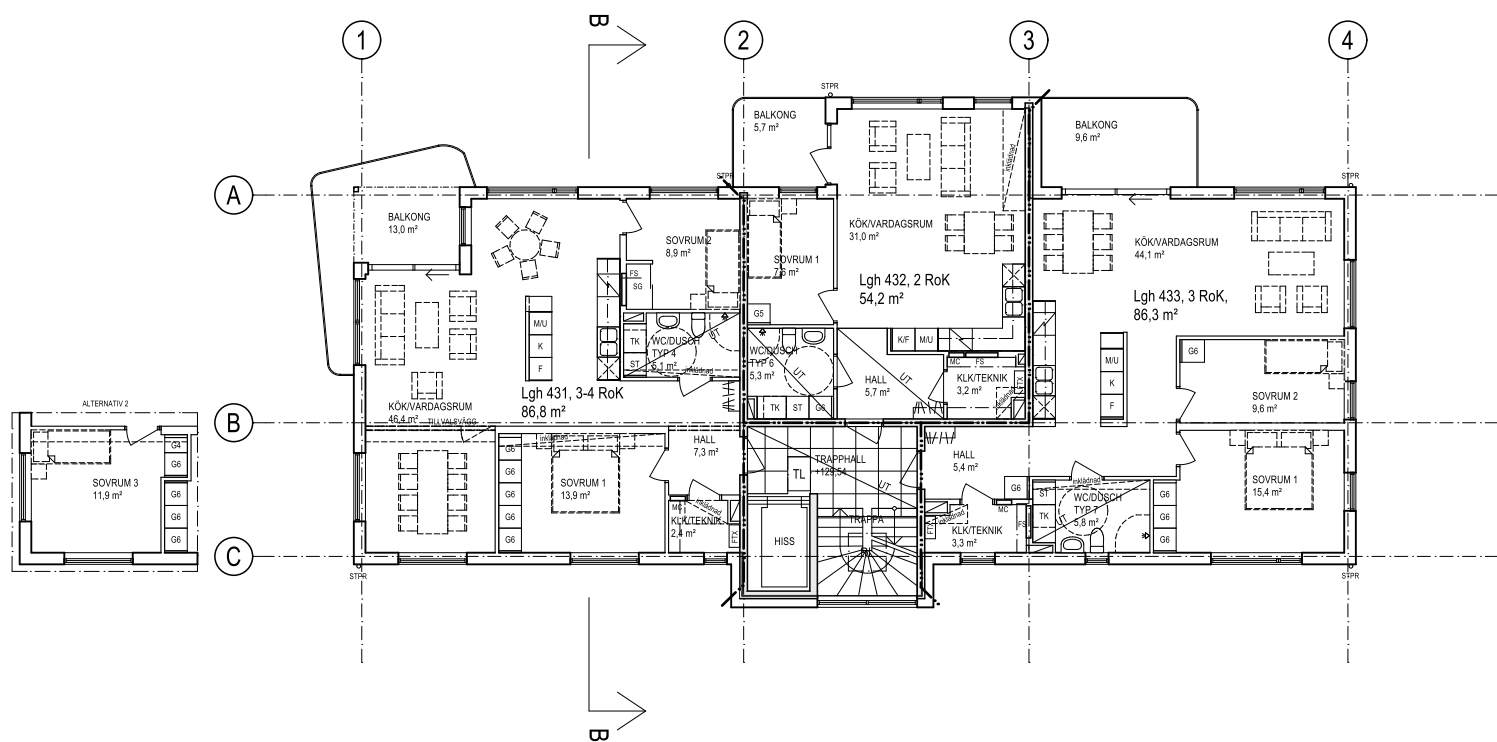
| | | | | | |
|------------|------------|----------|----------------------|-------------|--------------|
| UPPDRAG NR | 114 008 01 | RITAD AV | VS | HANDLÄGGARE | N-G ERIKSSON |
| DATUM | 2015-05-20 | ANSVARIG | PER-HENRIK JOHANSSON | | |

NYBYGGNAD AV BOSTÄDER

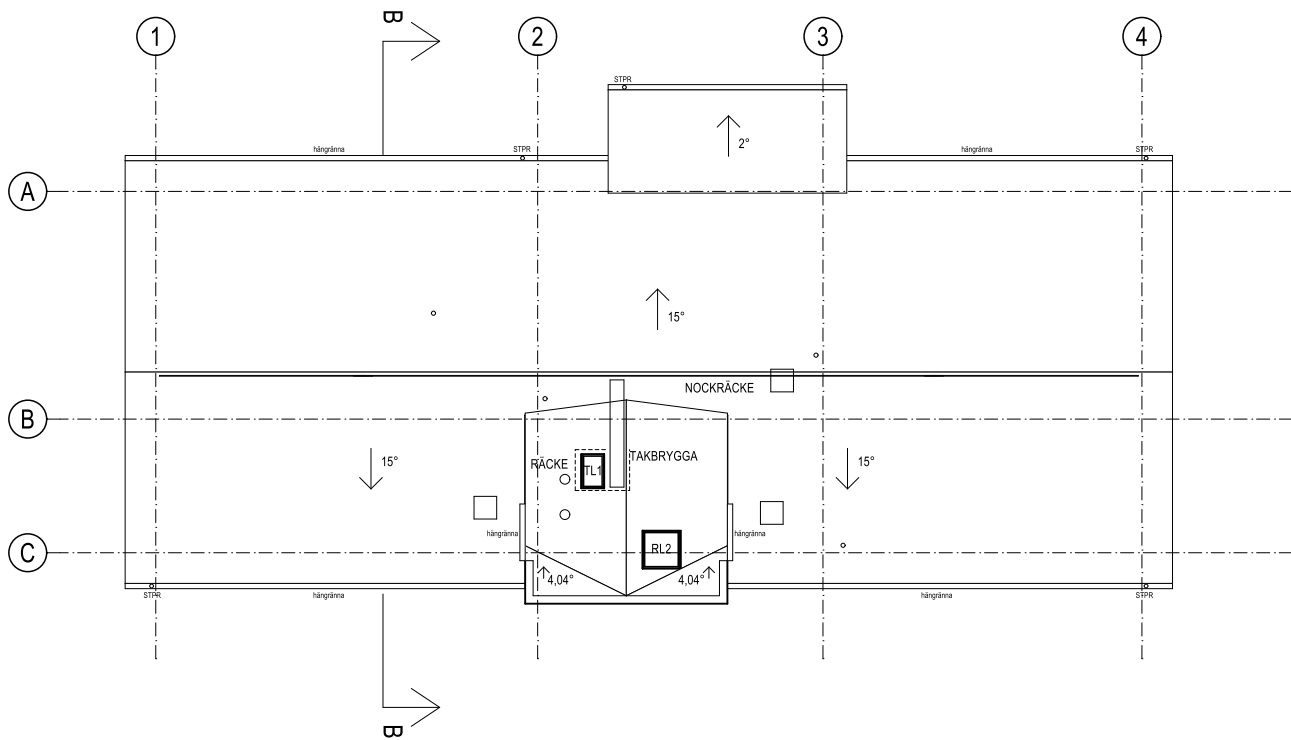
PLANER
HUS 4, ENTRÉPLAN (PLAN 1) OCH PLAN 2

| | | | | | |
|-------|--------------------------|--------|-----------|---|-----|
| SKALA | A1 = 1:100 A3 = 1:200 | NUMMER | | I | BET |
| | | | A-40.1-41 | | |

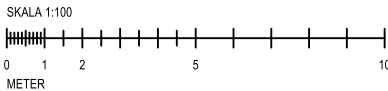
PATH: lwzserver7\Projekt\liljewall\201411140800\ARCH\CAD\BRF BJÖRKVIKEN_HUS_4.plt PRINTED: 2015-07-01 - 11:51; BY: trda



PLAN 3



TAKPLAN



HÄNVISNING

SE RITNING A-40.1-10

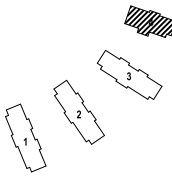
| BET | ANT | ÄNDRINGEN AVISER | DATUM | SIGN |
|-----|-----|------------------|-------|------|
| | | | | |
| | | | | |
| | | | | |

RELATIONSHANDLING

Derome
Mark & Bostad

TUVE BYGG

BRF BJÖRKVIKEN
ISFABRIKSVÄGEN

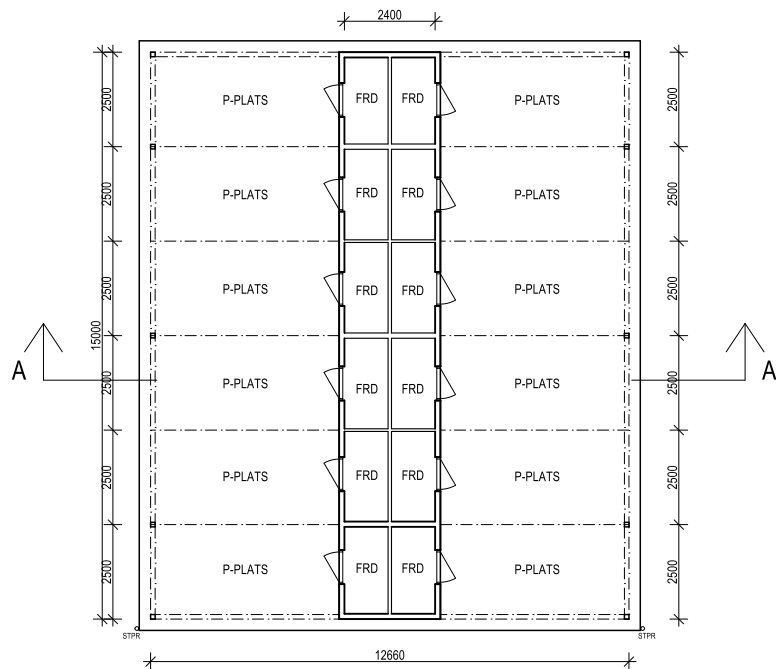


| | | | |
|---|----|-------------------------|---------------|
| X | A | LILJEWALL arkitekter ab | 010-205 10 80 |
| X | K | VBK | 031-703 35 00 |
| X | VS | Energi Triangeln AB | 031-707 97 30 |
| X | VE | EH-Konsult AB | 031-27 17 40 |
| X | E | BA Elteknik | 0300-725 60 |
| X | M | Carlbergs | 031-742 25 80 |
| X | BR | Fast Engineering/BAWAB | 070-583 75 14 |
| X | LJ | Akustikforum | 031-61 63 61 |
| X | G | Pålab | 0730-69 84 43 |

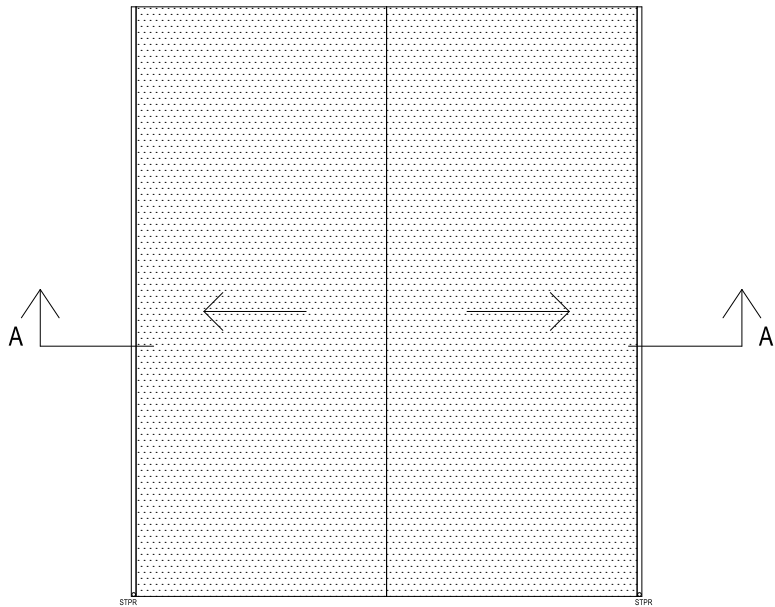
| | | | | | |
|------------|-------------|----------|----------------------|-------------|--------------|
| UPPDRAG NR | 1 14 008 01 | RITAD AV | VS | HANDLÄGGARE | N-G ERIKSSON |
| DATUM | 2015-05-20 | ANSVARIG | PER-HENRIK JOHANSSON | | |

NYBYGGNAD AV BOSTÄDER
PLANER
HUS 4, PLAN 3 OCH TAKPLAN

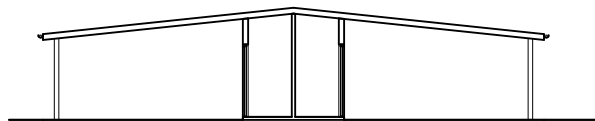
| | | | | | |
|-------|--------------------------|--------|--|-----|-----------|
| SKALA | A1 = 1:100 A3 = 1:200 | NUMMER | | BET | A-40.1-43 |
|-------|--------------------------|--------|--|-----|-----------|



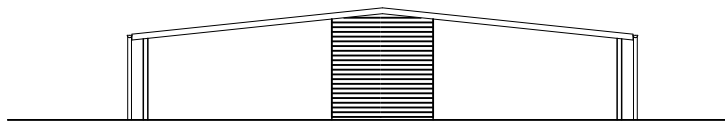
ENTRÉPLAN



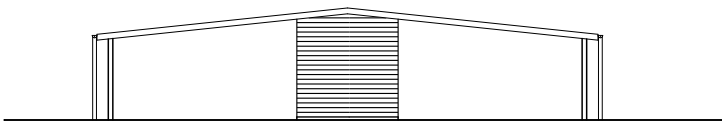
TAKPLAN



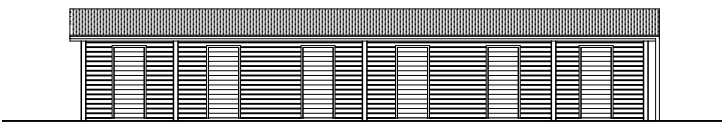
SEKTION A-A



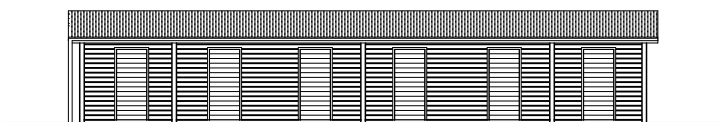
FASAD MOT NORR



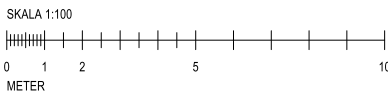
FASAD MOT SÖDER



FASAD MOT ÖSTER



FASAD MOT VÄSTER



HÄNVISNING

SE RITNING A-40.1-10

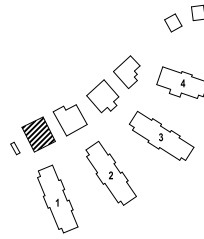
| | | | | |
|-----|-----|------------------|-------|------|
| | | | | |
| | | | | |
| | | | | |
| | | | | |
| BET | ANT | ÄNDRINGEN AVISER | DATUM | SIGN |

RELATIONSHANDLING

Derome
Mark & Bostad

TUVE BYGG

BRF BJÖRKVIKEN
ISFABRIKSVÄGEN



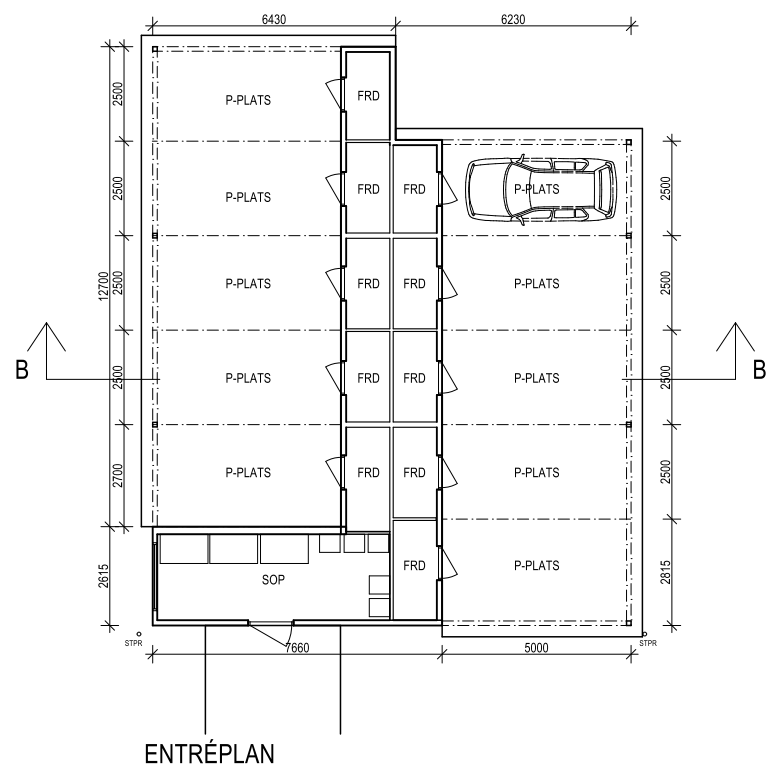
| | | | |
|----|------------------------|-------------------------|---------------|
| X | A | LILJEWALL arkitekter ab | 010-205 10 80 |
| K | VBK | | 031-703 35 00 |
| VS | Energi Triangeln AB | | 031-707 97 30 |
| VE | EH-Konsult AB | | 031-27 17 40 |
| E | BA Elteknik | | 0300-725 60 |
| M | Carlbergs | | 031-742 25 80 |
| BR | Fast Engineering/BAWAB | | 070-583 75 14 |
| LJ | Akustikforum | | 031-61 63 61 |
| G | Pålab | | 0730-69 84 43 |

| | | | | | |
|------------|-------------|----------|----------------------|-------------|--------------|
| UPPDRAG NR | 1 14 008 01 | RITAD AV | VS | HANDLÄGGARE | N-G ERIKSSON |
| DATUM | 2015-05-20 | ANSVARIG | PER-HENRIK JOHANSSON | | |

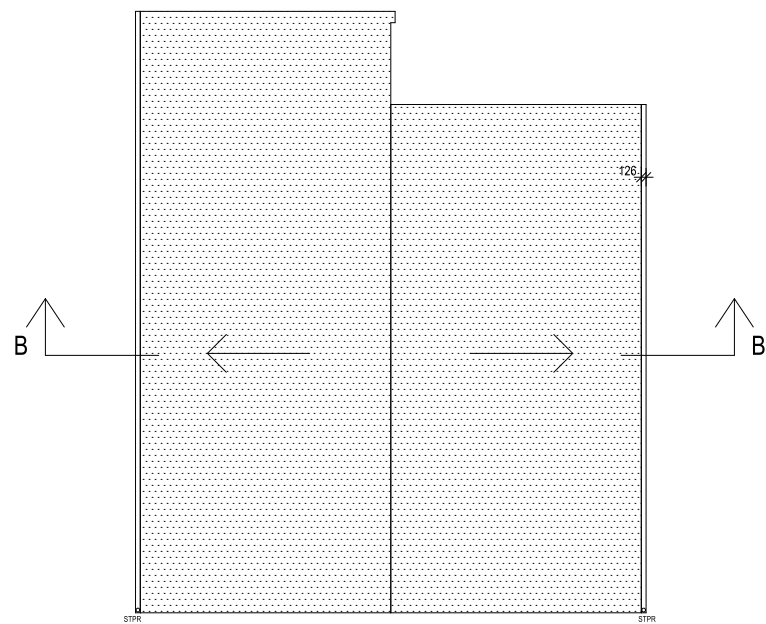
NYBYGGNAD AV BOSTÄDER
CARPORT/MILJÖHUS 1
PLANER, FASADER OCH SEKTION

| | | | | | |
|-------|--------------------------|--------|--|-----|-----------|
| SKALA | A1 = 1:100 A3 = 1:200 | NUMMER | | BET | A-40.1-51 |
|-------|--------------------------|--------|--|-----|-----------|

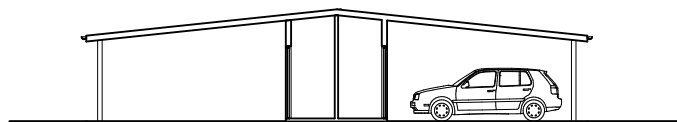
PATH: \\wzserver7\projekt\liljewall\201411400800\ARCH\CAD\BRF_BJÖRKVIKEN_KOMPLEMENTBYGGNADER.pln; PRINTED: 2015-07-01 - 11:46; BY: tda



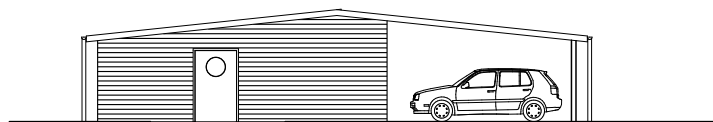
ENTRÉPLAN



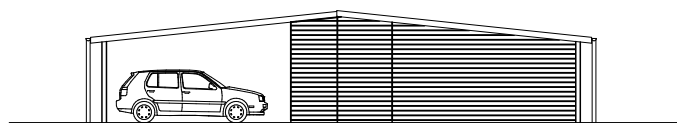
TAKPLAN



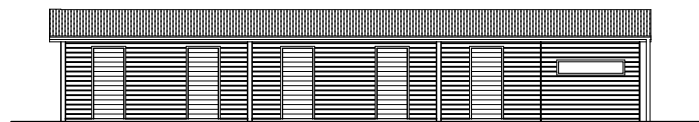
SEKTION B-B



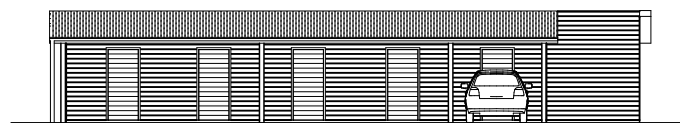
FASAD MOT SÖDER



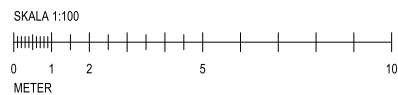
FASAD MOT NORR



FASAD MOT VÄSTER



FASAD MOT ÖSTER



HÄNVISNING
SE RITNING A-40.1-10

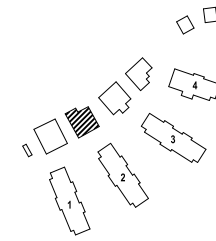
| | | | | |
|-----|-----|------------------|-------|------|
| | | | | |
| | | | | |
| | | | | |
| | | | | |
| BET | ANT | ÄNDRINGEN AVISER | DATUM | SIGN |

RELATIONSHANDLING

Derome
Mark & Bostad

TUVE BYGG

BRF BJÖRQVIKEN
ISFABRIKSVÄGEN



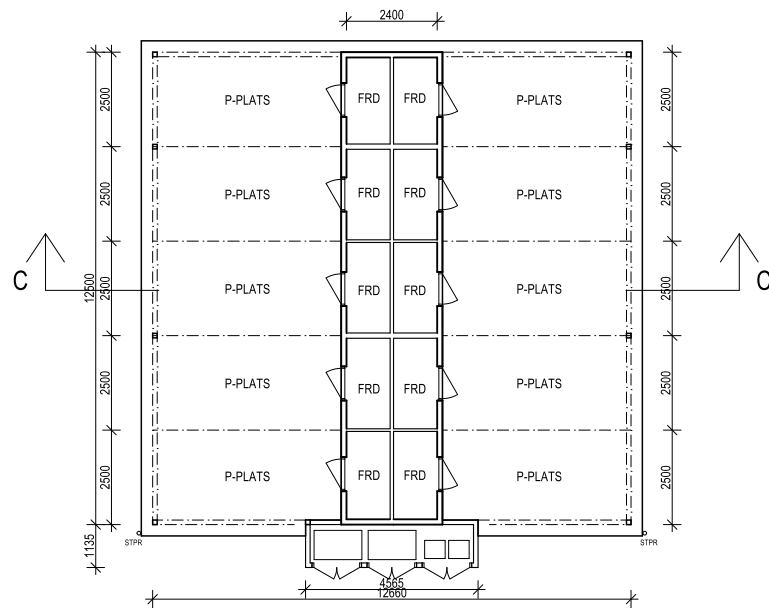
| | | | |
|---|----|-------------------------|---------------|
| ✕ | A | LILJEWALL arkitekter ab | 010-205 10 80 |
| ✕ | K | VBK | 031-703 35 00 |
| | VS | Energi Triangeln AB | 031-707 97 30 |
| | VE | EH-Konsult AB | 031-27 17 40 |
| | E | BA Elteknik | 0300-725 60 |
| | M | Carlbergs | 031-742 25 80 |
| | BR | Fast Engineering/BAWAB | 070-583 75 14 |
| | LJ | Akustikforum | 031-61 63 61 |
| | G | Pålab | 0730-69 84 43 |
| | | | |

| | | |
|-------------|----------------------|--------------|
| UPPDRAG NR | RITAD AV | HANDLÄGGARE |
| 1 14 008 01 | VS | N-G ERIKSSON |
| DATUM | ANSVARIG | |
| 2015-05-20 | PER-HENRIK JOHANSSON | |

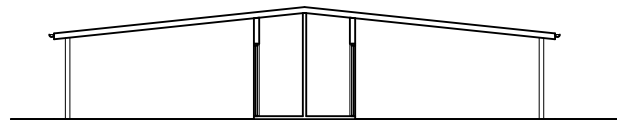
NYBYGGNAD AV BOSTÄDER
CARPORT/MILJÖHUS 2
PLANER, FASADER OCH SEKTION

| | | | |
|-------|--------------------------|--------|------------------|
| SKALA | A1 = 1:100 A3 = 1:200 | NUMMER | I BET |
| | | | A-40.1-52 |

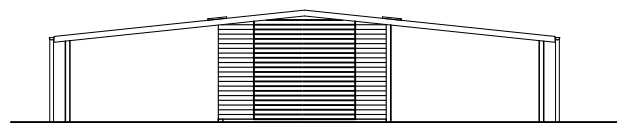
PATH: lwzserver7/Projektar/Liljewall/201411400800A/ARCH/CAD/BRF_BJÖRQVIKEN_KOMPLEMENTBYGGNADER.pln; PRINTED: 2015-07-01 - 11:47; BY: Tida



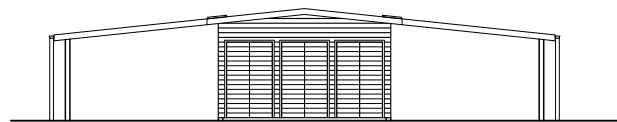
ENTRÉPLAN



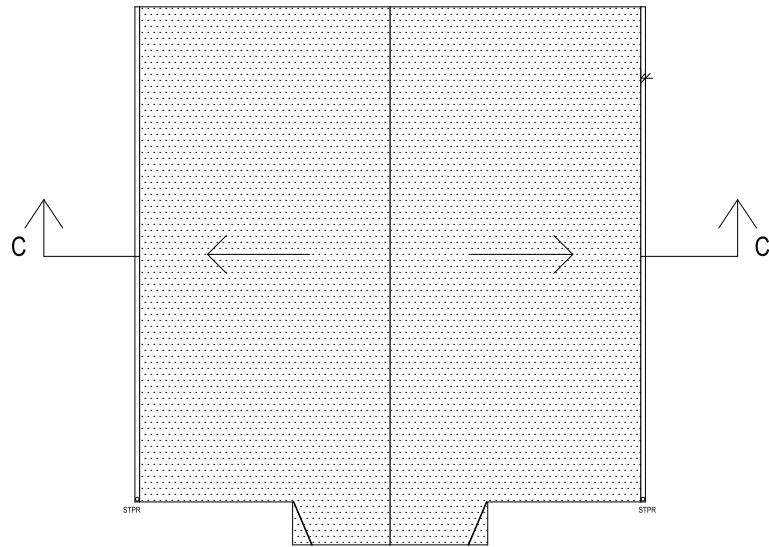
SEKTION C-C



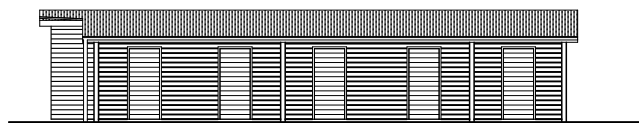
FASAD MOT NORR



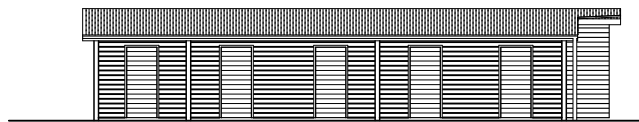
FASAD MOT SÖDER



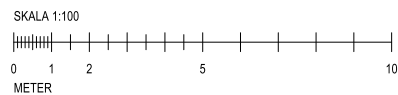
TAKPLAN



FASAD MOT VÄSTER



FASAD MOT ÖSTER



HÄNVISNING
SE RITNING A-40.1-10

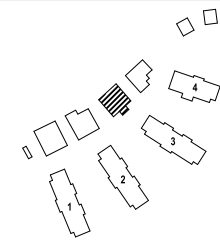
| | | | | |
|-----|-----|------------------|-------|------|
| | | | | |
| | | | | |
| | | | | |
| BET | ANT | ÄNDRINGEN AVISER | DATUM | SIGN |

RELATIONSHANDLING

Derome
Mark & Bostad

TUVE BYGG

BRF BJÖRKVIKEN
ISFABRIKSVÄGEN



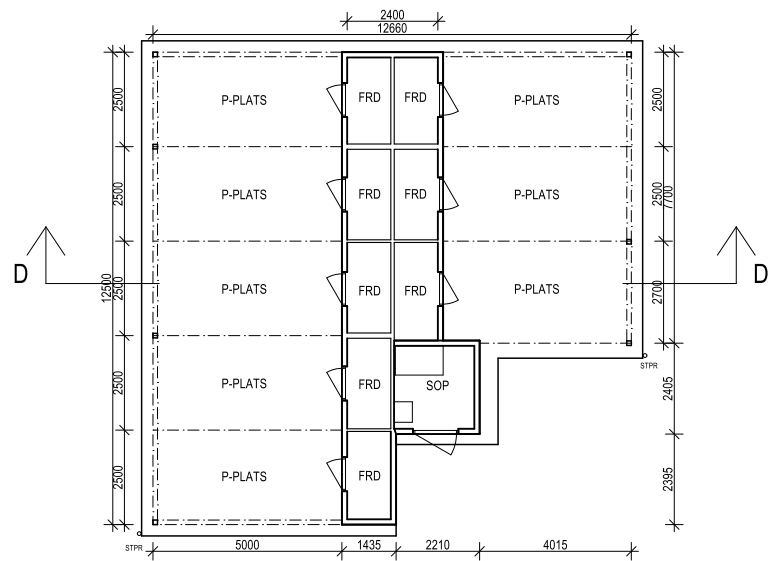
| | | | |
|---|----|-------------------------|---------------|
| ✕ | A | LILJEWALL arkitekter ab | 010-205 10 80 |
| | K | VBK | 031-703 35 00 |
| | VS | Energi Triangeln AB | 031-707 97 30 |
| | VE | EH-Konsult AB | 031-27 17 40 |
| | E | BA Elteknik | 0300-725 60 |
| | M | Carlbergs | 031-742 25 80 |
| | BR | Fast Engineering/BAWAB | 070-583 75 14 |
| | LJ | Akustikforum | 031-61 63 61 |
| | G | Pålab | 0730-69 84 43 |

| | | | | | |
|------------|-------------|----------|----------------------|-------------|--------------|
| UPPDRAG NR | 1 14 008 01 | RITAD AV | VS | HANDLÄGGARE | N-G ERIKSSON |
| DATUM | 2015-05-20 | ANSVARIG | PER-HENRIK JOHANSSON | | |

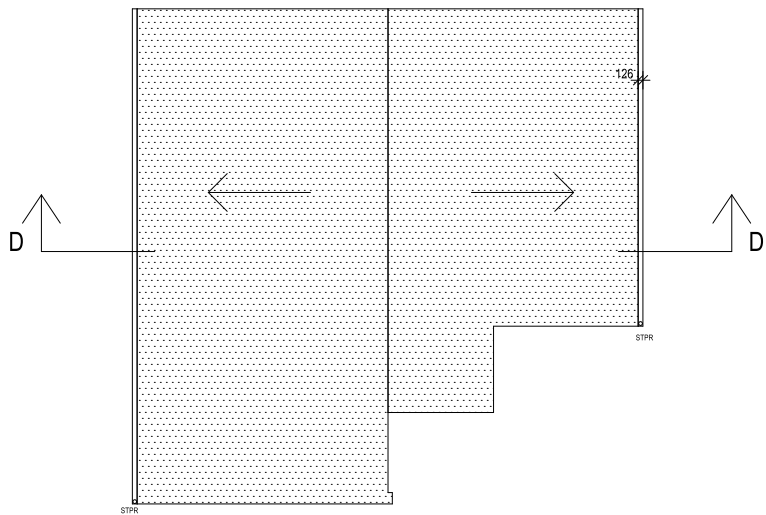
NYBYGGNAD AV BOSTÄDER
CARPORT/MILJÖHUS 3
PLANER, FASADER OCH SEKTION

| | | | | | |
|-------|--------------------------|--------|--|-------|-----------|
| SKALA | A1 = 1:100 A3 = 1:200 | NUMMER | | I BET | A-40.1-53 |
|-------|--------------------------|--------|--|-------|-----------|

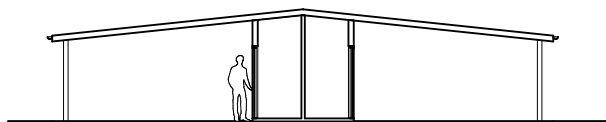
PATH: lwzserver7\Projekt\liljewall\201411400800\ARCH\CAD\BRF_BJÖRKVIKEN_KOMPLEMENTBYGGNADER.pln; PRINTED: 2015-07-01 - 11:47; BY: Tida



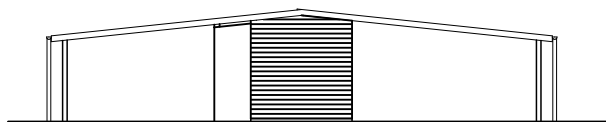
ENTRÉPLAN



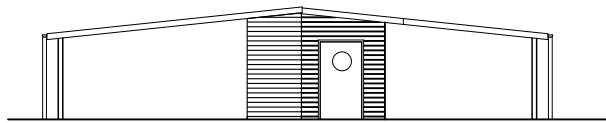
TAKPLAN



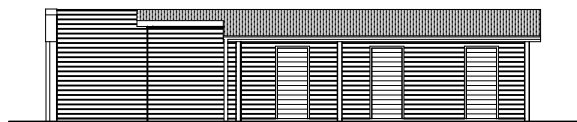
SEKTION D-D



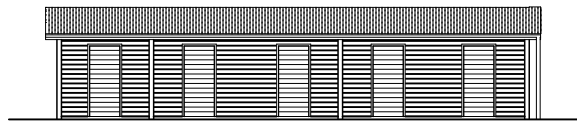
FASAD MOT NORR



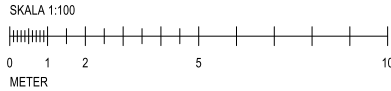
FASAD MOT SÖDER



FASAD MOT ÖSTER



FASAD MOT VÄSTER



HÄNVISNING

SE RITNING A-40.1-10

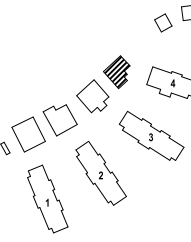
| | | | | |
|-----|-----|------------------|-------|------|
| | | | | |
| | | | | |
| | | | | |
| | | | | |
| BET | ANT | ÄNDRINGEN AVISER | DATUM | SIGN |

RELATIONSHANDLING

Derome
Mark & Bostad

TUVE BYGG

BRF BJÖRQVIKEN
ISFABRIKSVÄGEN



| | | | |
|---|----|-------------------------|---------------|
| X | A | LILJEWALL arkitekter ab | 010-205 10 80 |
| | K | VBK | 031-703 35 00 |
| | VS | Energi Triangeln AB | 031-707 97 30 |
| | VE | EH-Konsult AB | 031-27 17 40 |
| | E | BA Elteknik | 0300-725 60 |
| | M | Carlbergs | 031-742 25 80 |
| | BR | Fast Engineering/BAWAB | 070-583 75 14 |
| | LJ | Akustikforum | 031-61 63 61 |
| | G | Pålab | 0730-69 84 43 |

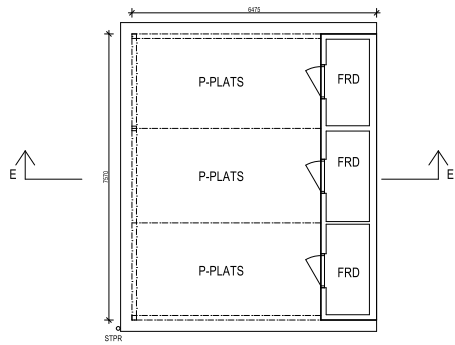
| | | |
|-------------|----------------------|--------------|
| UPPDRAG NR | RITAD AV | HANDLÄGGARE |
| 1 14 008 01 | VS | N-G ERIKSSON |
| DATUM | ANSVARIG | |
| 2015-05-20 | PER-HENRIK JOHANSSON | |

NYBYGGNAD AV BOSTÄDER
CARPORT/MILJÖHUS 4
PLANER, FASADER OCH SEKTION

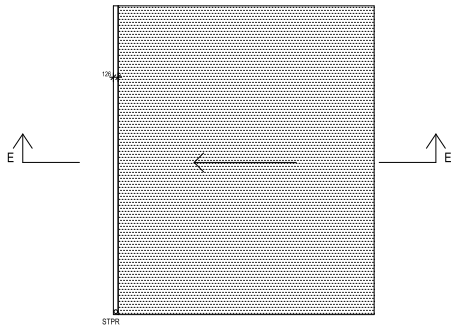
| | | | | |
|-------|--------------------------|--------|---|-----------|
| SKALA | A1 = 1:100 A3 = 1:200 | NUMMER | I | BET |
| | | | | A-40.1-54 |

PATH: lwzserver7/Projektar/Liljewall/201411400800A/ARCHICAD/BRF_BJÖRQVIKEN_KOMPLEMENTBYGGNADER.pln; PRINTED: 2015-07-01 - 11:47; BY: Tida

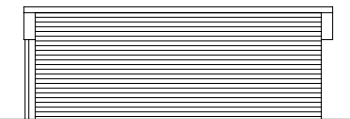
CARPORT 5 OCH 6



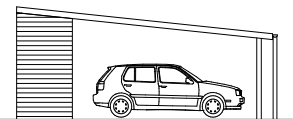
ENTRÉPLAN



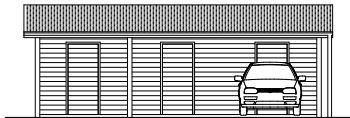
TAKPLAN



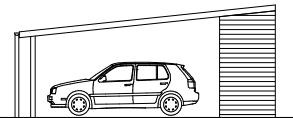
FASAD MOT ÖSTER



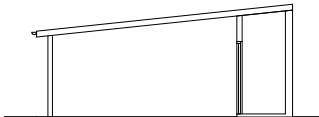
FASAD MOT NORR



FASAD MOT VÄSTER

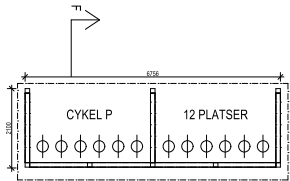


FASAD MOT SÖDER

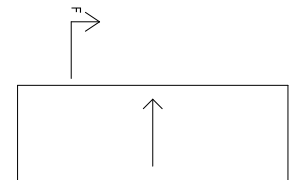


SEKTION E-E

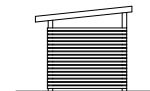
CYKELPARKERING



ENTRÉPLAN



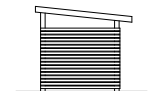
TAKPLAN



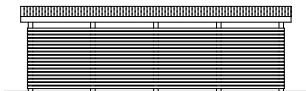
FASAD MOT ÖSTER



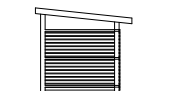
FASAD MOT NORR



FASAD MOT VÄSTER



FASAD MOT SÖDER



SEKTION F-F



HÄNVISNING

SE RITNING A-40.1-10

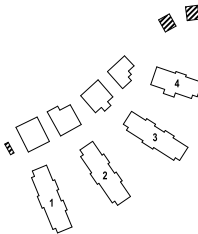
| BET | ANT | ÄNDRINGEN AVISER | DATUM | SIGN |
|-----|-----|------------------|-------|------|
|-----|-----|------------------|-------|------|

RELATIONSHANDLING

Derome
Mark & Bostad

TUVE BYGG

BRF BJÖRKVIKEN
ISFABRIKSVÄGEN

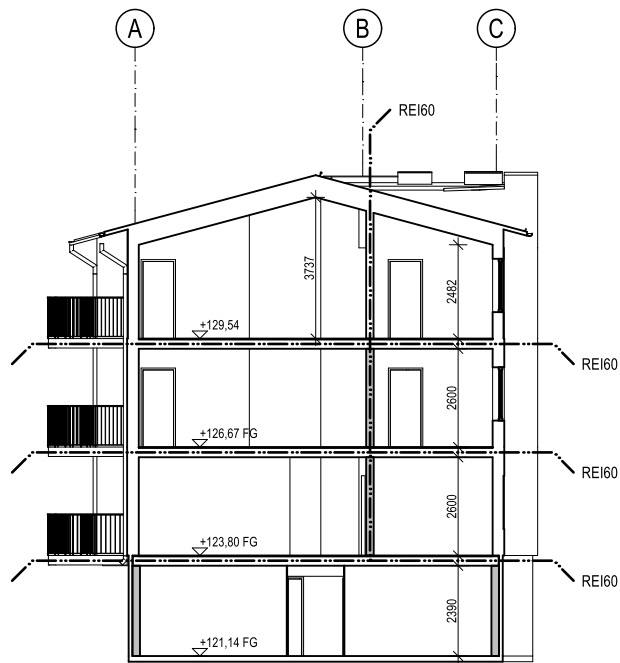


| | | |
|----|-------------------------|---------------|
| A | LILJEWALL arkitekter ab | 010-205 10 80 |
| K | VBK | 031-703 35 00 |
| VS | Energi Triangeln AB | 031-707 97 30 |
| VE | EH-Konsult AB | 031-27 17 40 |
| E | BA Elteknik | 0300-725 60 |
| M | Carlbergs | 031-742 25 80 |
| BR | Fast Engineering/BAWAB | 070-583 75 14 |
| LJ | Akustikforum | 031-61 63 61 |
| G | Pålab | 0730-69 84 43 |

| | | | | | |
|------------|-------------|----------|----------------------|-------------|--------------|
| UPPDRAG NR | 1 14 008 01 | RITAD AV | VS | HANDLÄGGARE | N-G ERIKSSON |
| DATUM | 2015-05-20 | ANSVARIG | PER-HENRIK JOHANSSON | | |

NYBYGGNAD AV BOSTÄDER
CARPORT 5 OCH 6, CYKELPARKERING
PLANER, FASADER OCH SEKTION

| | | | | | |
|-------|--------------------------|--------|--|-----|-----------|
| SKALA | A1 = 1:100 A3 = 1:200 | NUMMER | | BET | A-40.1-55 |
|-------|--------------------------|--------|--|-----|-----------|



SEKTION A



HÄNVISNING

SE RITNING A-40.1-10

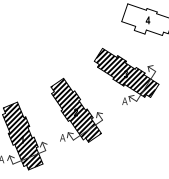
| | | | | |
|-----|-----|------------------|-------|------|
| | | | | |
| | | | | |
| | | | | |
| | | | | |
| BET | ANT | ÄNDRINGEN AVISER | DATUM | SIGN |

RELATIONSHANDLING

Derome
Mark & Bostad

TUVE BYGG

BRF BJÖRKVIKEN
ISFABRIKSVÄGEN



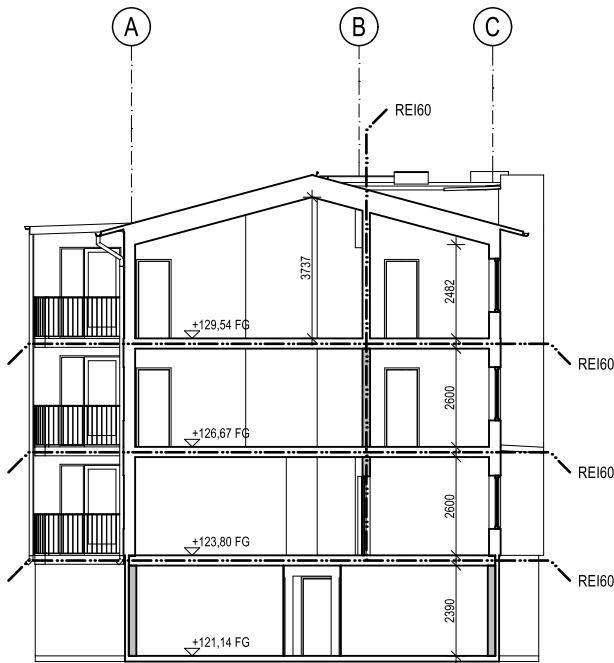
| | | | |
|---|----|-------------------------|---------------|
| ✕ | A | LILJEWALL arkitekter ab | 010-205 10 80 |
| ✕ | K | VBK | 031-703 35 00 |
| | VS | Energi Triangeln AB | 031-707 97 30 |
| | VE | EH-Konsult AB | 031-27 17 40 |
| | E | BA Elteknik | 0300-725 60 |
| | M | Carlbergs | 031-742 25 80 |
| | BR | Fast Engineering/BAWAB | 070-583 75 14 |
| | LJ | Akustikforum | 031-61 63 61 |
| | G | Pålab | 0730-69 84 43 |
| | | | |
| | | | |

| | | |
|-------------|----------------------|--------------|
| UPPDRAG NR | RITAD AV | HANDLÄGGARE |
| 1 14 008 01 | VS | N-G ERIKSSON |
| DATUM | ANSVARIG | |
| 2015-05-20 | PER-HENRIK JOHANSSON | |

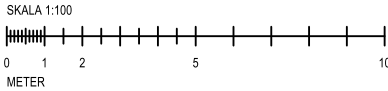
NYBYGGNAD AV BOSTÄDER

SEKTIONER
HUS 1-3, SEKTION A-A

| | | | | |
|-------|--------------------------|--------|-----------|-----|
| SKALA | A1 = 1:100 A3 = 1:200 | NUMMER | A-40.2-11 | BET |
|-------|--------------------------|--------|-----------|-----|



SEKTION B



HÄNVISNING

SE RITNING A-40.1-10

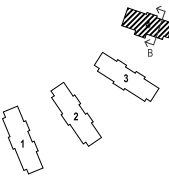
| | | | | |
|-----|-----|------------------|-------|------|
| | | | | |
| | | | | |
| | | | | |
| | | | | |
| BET | ANT | ÄNDRINGEN AVISER | DATUM | SIGN |

RELATIONSHANDLING

Derome
Mark & Bostad

TUVE BYGG

BRF BJÖRKVIKEN
ISFABRIKSVÄGEN



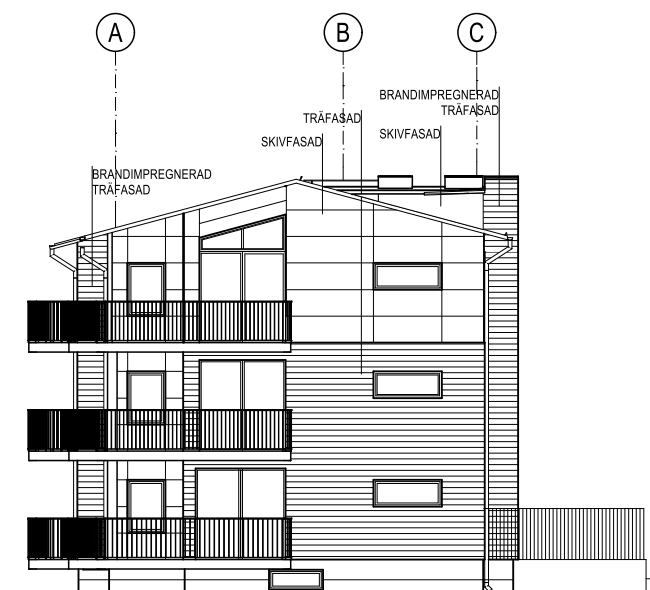
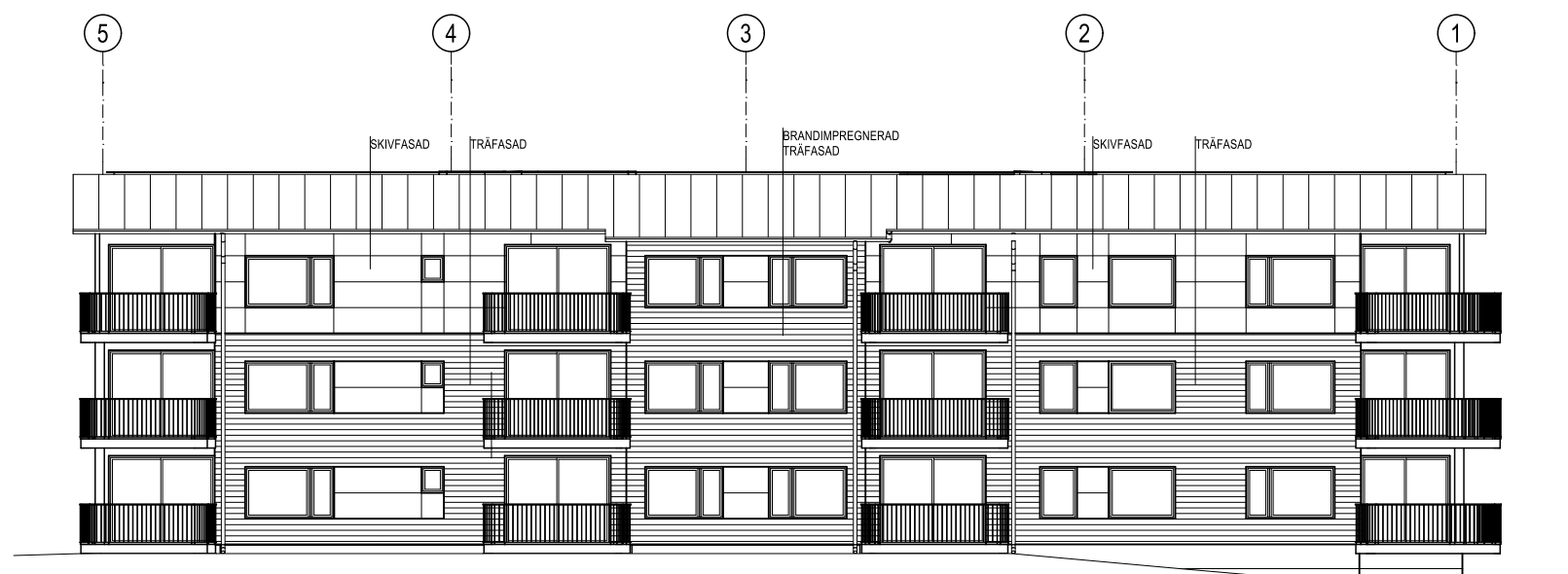
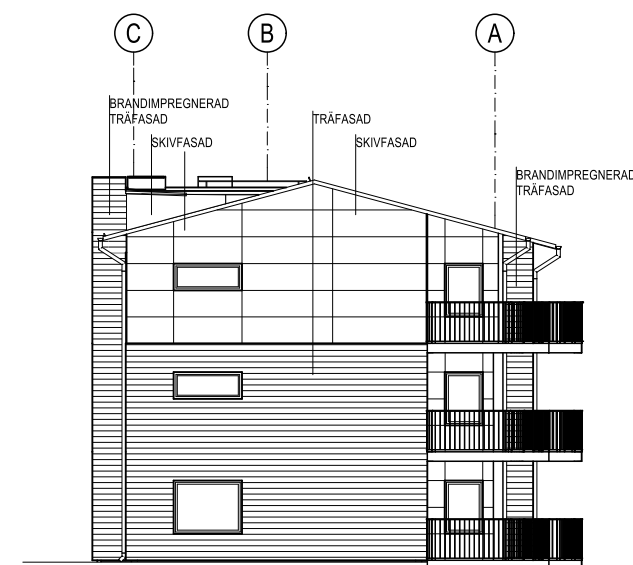
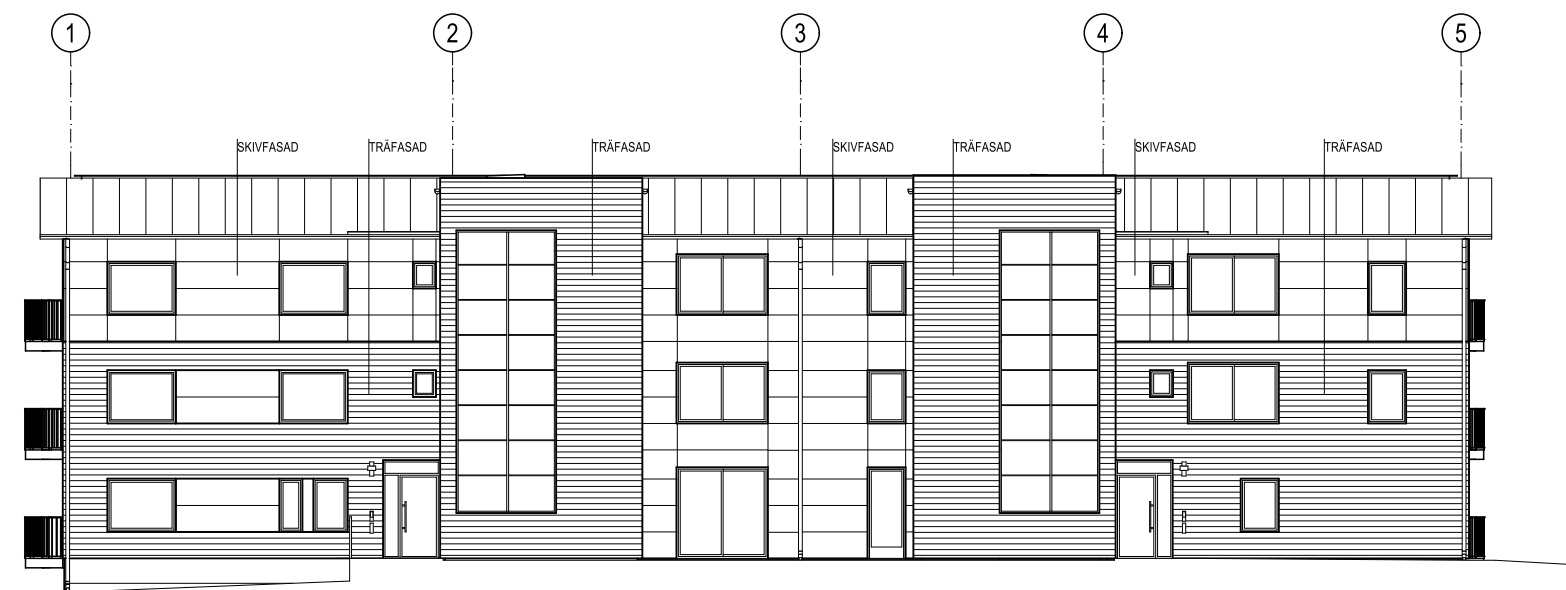
| | | | |
|---|----|-------------------------|---------------|
| ✕ | A | LILJEWALL arkitekter ab | 010-205 10 80 |
| ✕ | K | VBK | 031-703 35 00 |
| | VS | Energi Triangeln AB | 031-707 97 30 |
| | VE | EH-Konsult AB | 031-27 17 40 |
| | E | BA Elteknik | 0300-725 60 |
| | M | Carlbergs | 031-742 25 80 |
| | BR | Fast Engineering/BAWAB | 070-583 75 14 |
| | LJ | Akustikforum | 031-61 63 61 |
| | G | Pålab | 0730-69 84 43 |
| | | | |
| | | | |

| | | |
|-------------|----------------------|--------------|
| UPPDRAG NR | RITAD AV | HANDLÄGGARE |
| 1 14 008 01 | VS | N-G ERIKSSON |
| DATUM | ANSVARIG | |
| 2015-05-20 | PER-HENRIK JOHANSSON | |

NYBYGGNAD AV BOSTÄDER

SEKTIONER
HUS 4, SEKTION B-B

| | | | | |
|-------|--------------------------|--------|-----------|-----|
| SKALA | A1 = 1:100 A3 = 1:200 | NUMMER | A-40.2-41 | BET |
|-------|--------------------------|--------|-----------|-----|



SKALA 1:100

0 1 2 5 10

METER

HÄNVISNING

SE RITNING A-40.1-10

| | | | | |
|-----|-----|-----------------|-------|------|
| | | | | |
| | | | | |
| | | | | |
| | | | | |
| BET | ANT | ÄNDRINGEN AVSER | DATUM | SIGN |

RELATIONSHANDLING

Derome
Mark & Bostad

BRF BJÖRKVIKEN
ISFABRIKSVÄGEN

ISFABRIKSVÄGEN

| | | | |
|---|----|-------------------------|---------------|
| X | A | LILJEWALL arkitekter ab | 010-205 10 80 |
| | K | VBK | 031-703 35 00 |
| | VS | Energi Triangeln AB | 031-707 97 30 |
| | VE | EH-Konsult AB | 031-27 17 40 |
| | E | BA Elteknik | 0300-725 60 |
| | M | Carlbergs | 031-742 25 60 |
| | BR | Fast Engineering/BAWAB | 070-583 75 14 |
| | LJ | Akustikforum | 031-61 63 61 |
| | G | Pålab | 0730-69 84 43 |

| | | |
|---------------------------|----------------------------------|-----------------------------|
| UPPDRAK NR 1 14 008 01 | RITAD AV VS | HANDLÄGGARE N-G ERIKSSON |
| DATUM 2015-05-20 | ANSVARIG PER-HENRIK JOHANSSON | |

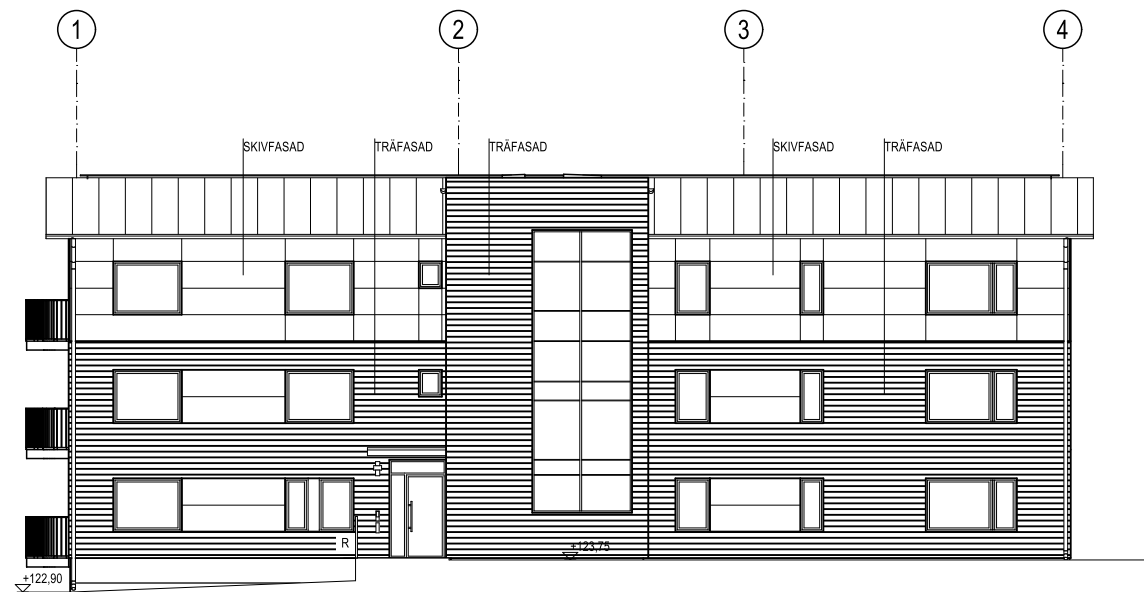
NYBYGGNAD AV BOSTÄDER

FASADER, HUS 1-3

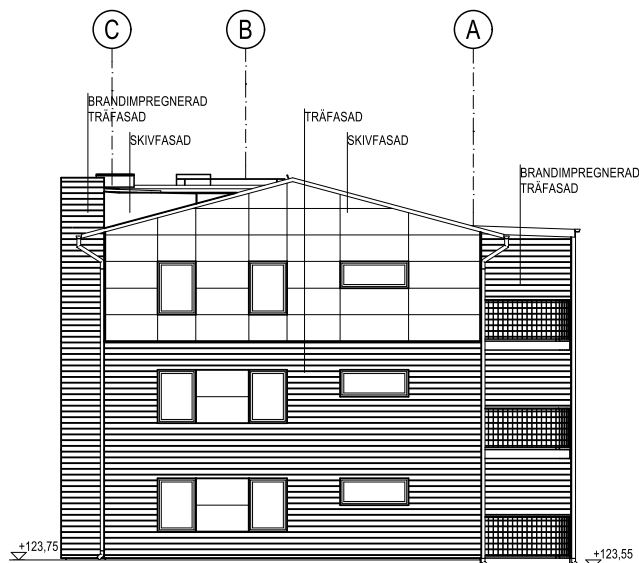
FASAD MOT ÖSTER, NORR, VÄSTER OCH SÖDER

| | | |
|--------------------------|-----------|-----|
| SKALA | NUMMER | BET |
| A1 = 1:100 A3 = 1:200 | A-40.3-11 | |

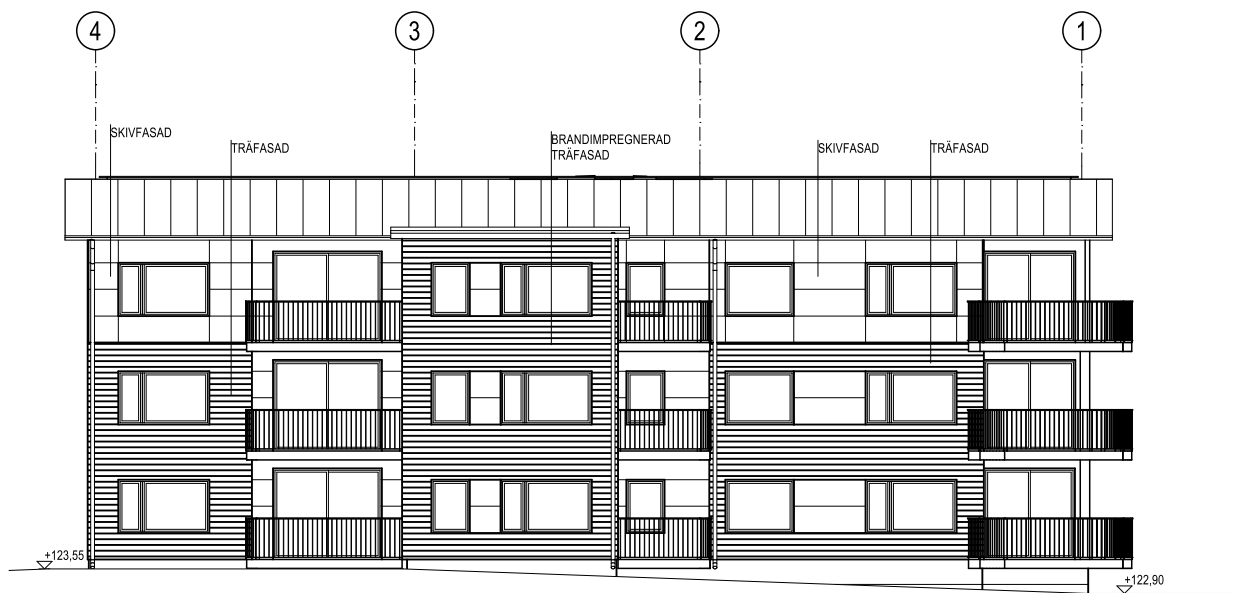
PATH: \\w2kserver7\Projektering\Lillevall\2014\11400800\AARCHICAD\BRF_BJÖRKVIKEN_HUS_1-3_KÄLLARE_HUS_1-2.dwg; PRINTED: 2015-07-01 - 11:39; BY: fnda



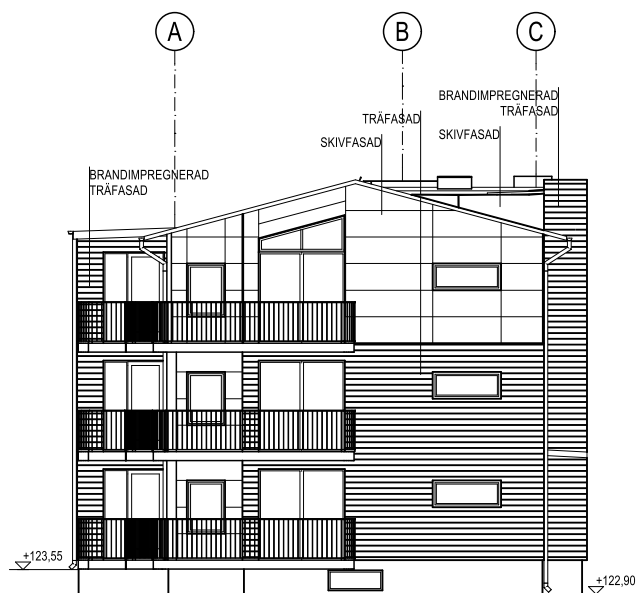
FASAD MOT ÖSTER



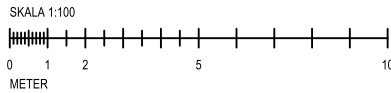
FASAD MOT NORR



FASAD MOT VÄSTER

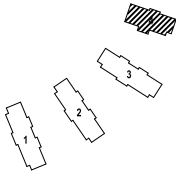


FASAD MOT SÖDER



HÄNVISNING
SE RITNING A-40.1-10

| BET | ANT | ÄNDRINGEN AVISER | DATUM | SIGN |
|-----|-----|------------------|-------|------|
| | | | | |
| | | | | |
| | | | | |

| RELATIONSHANDLING | | | | |
|---|------------|-------------------------|---------------|--|
| <div><div>Derome</div><div>Mark & Bostad</div></div> | | | | |
| <div><div>TUVE BYGG</div></div> | | | | |
| BRF BJÖRKVIKEN | | | | |
| ISFABRIKSVÄGEN | | | | |
|  | | | | |
| X | A | LILJEWALL arkitekter ab | 010-205 10 80 | |
| X | K | VBK | 031-703 35 00 | |
| VS | | Energi Triangeln AB | 031-707 97 30 | |
| VE | | EH-Konsult AB | 031-27 17 40 | |
| E | | BA Elteknik | 0300-725 60 | |
| M | | Carlbergs | 031-742 25 80 | |
| BR | | Fast Engineering/BAWAB | 070-583 75 14 | |
| LJ | | Akustikforum | 031-61 63 61 | |
| G | | Pålab | 0730-69 84 43 | |
| | | | | |
| | | | | |
| UPPDRAG NR | | RITAD AV | HANDLÄGGARE | |
| 1 14 008 01 | | VS | N-G ERIKSSON | |
| DATUM | | ANSVARIG | | |
| 2015-05-20 | | PER-HENRIK JOHANSSON | | |
| NYBYGGNAD AV BOSTÄDER | | | | |
| FASADER, HUS 4 | | | | |
| FASAD MOT ÖSTER, NORR, VÄSTER OCH SÖDER | | | | |
| SKALA | A1 = 1:100 | NUMMER | I BET | |
| | A3 = 1:200 | | A-40.3-41 | |

PATH: lwdsrver7/Projektar/Liljewall/201411400800A/ARCHICAD/BRF_BJÖRKVIKEN_HUS_4.pln PRINTED: 2015-07-01 - 11:51; BY: trda